

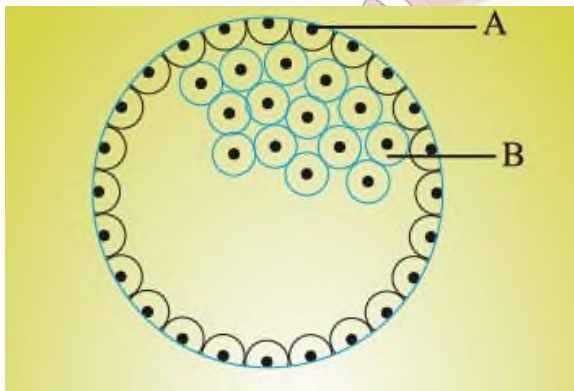
Chapter-3 HUMAN REPRODUCTION WORKSHEET-1

VSA (I Mark)

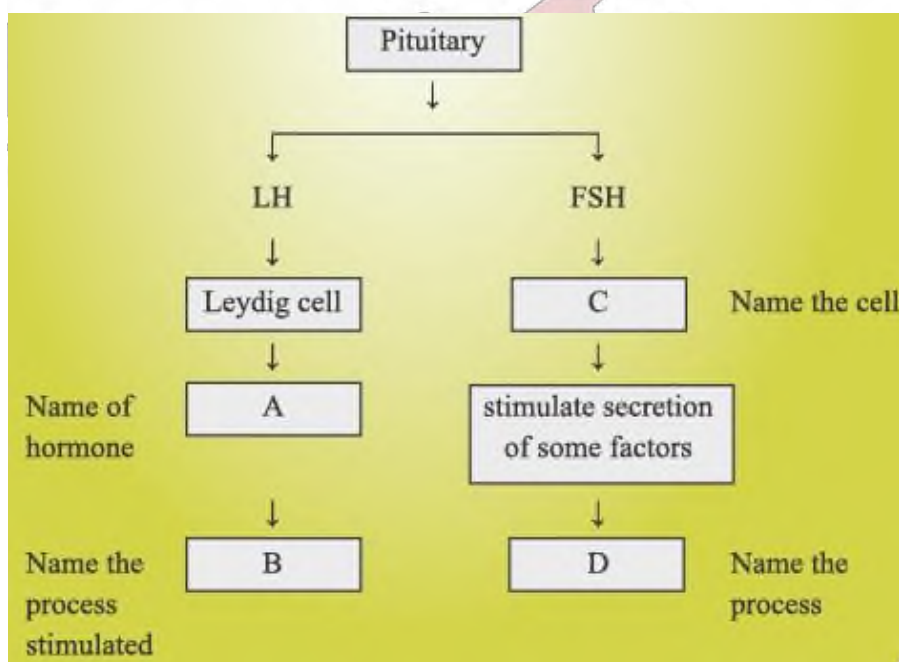
1. Failure of testes to descend into Scrotal sacs leads to sterility. Why?
2. How many sperms will be produced from 10 primary spermatocytes and how many eggs will be produced from 10 primary oocytes?
3. In ovary which structure transforms as corpus luteum and name the hormone secreted by corpus luteum?

SA-I (2 Marks)

4. In the given figure, give the name and functions of parts labelled A and B.



5. Given below is an incomplete flow chart showing influence of hormone on gametogenesis in male, observe the flow chart carefully and fill in the blank A, B, C and D.



6. Give reason for the following:

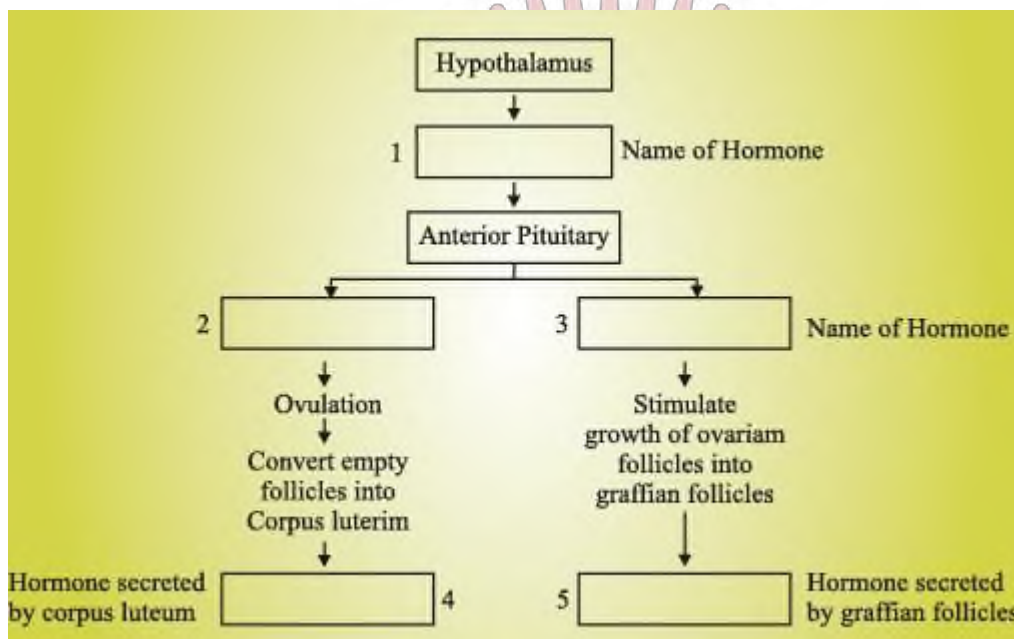
(a) The first half of the menstrual cycle is called follicular phase as well as proliferative phase.

(b) The second half of the menstrual cycle is called luteal phase as well as secretory phase.

7. What is meant by L.H. Surge? Write the role of L.H.

SA-II (3 Marks)

8. Study the flow chart given below. Name the hormones involved at each stage and in human female.

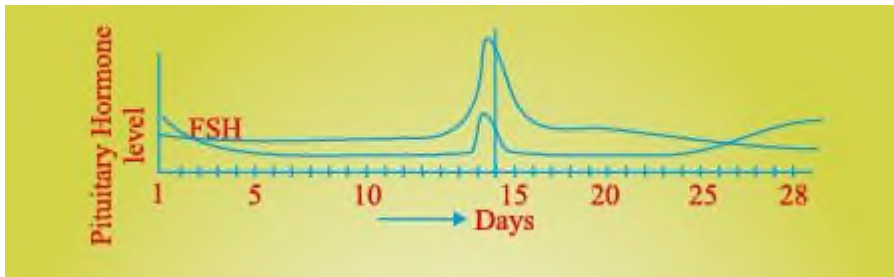


9. Three of the steps of neuro-endocrine mechanism in respect of parturition are mentioned below.

Write the missing steps in proper sequence.

- (a) Signals originate from fully developed foetus and placenta.
- (b)
- (c)
- (d) Oxytocin causes strong uterine contraction
- (e) Uterine contraction stimulates further secretion of oxytocin.
- (f)

10. (a) Read the graph given below. Correlate the ovarian events that take place in the human female according to the level of the pituitary hormone during the following day.



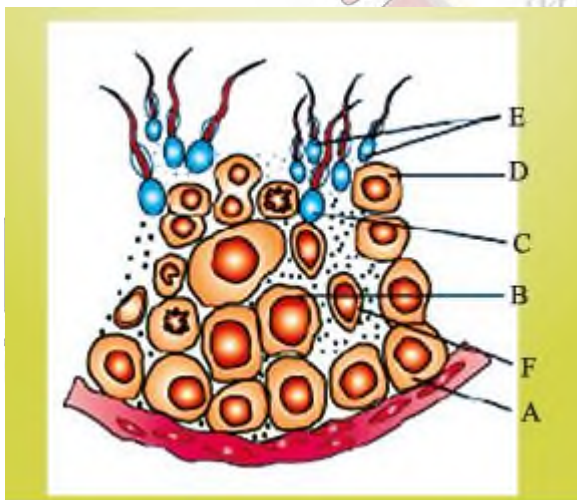
- (i) 10th -14th days (iii) 16th - 23th days
 (ii) 14th - 15th days (iv) 25th - 29th days (If the ovum is not fertilised)
 (b) What are the uterine events that follow beyond 29th day if the ovum is not fertilised.

11. T.S. of mammalian testis revealing seminiferous tubules show different types of cell.

- (i) Name the two types of cells of germinal epithelium.
 (ii) Name of cells scattered in connective tissue and lying between seminiferous tubules.

Differentiate between them on the basis of their functions.

12. Study the figure given:



- (i) Pick out the name of cells that undergo spermatogenesis.
 (ii) Name A, B, C and F.
 (iii) Give ploidy of B and E.
 (iv) Mention the function of 'F' cell.